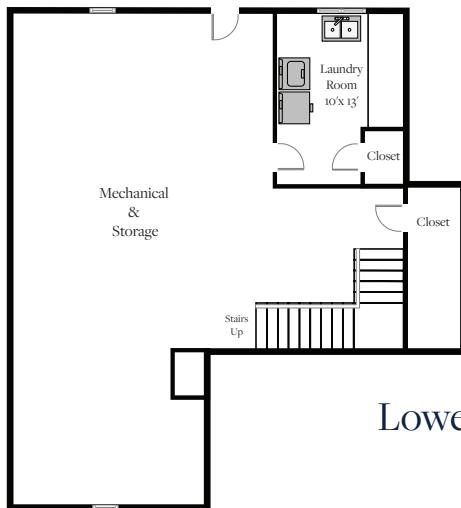
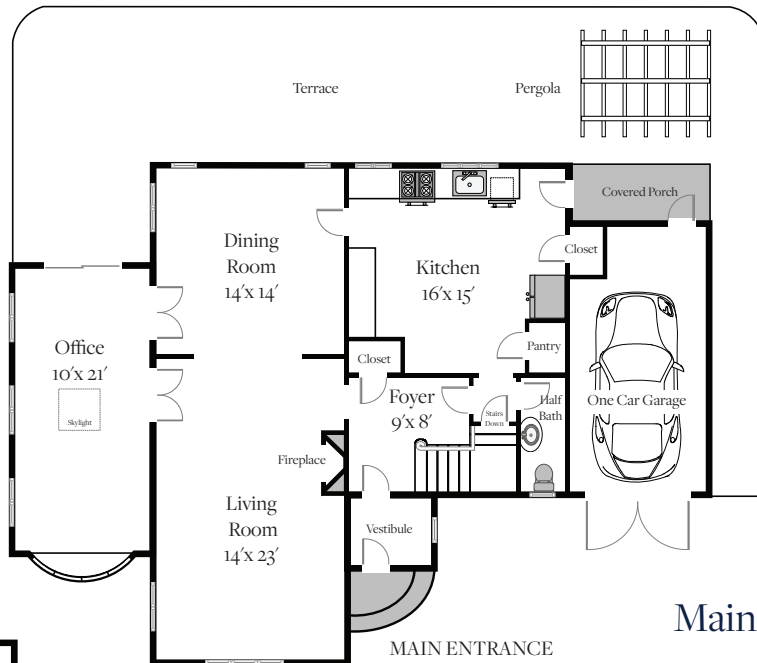
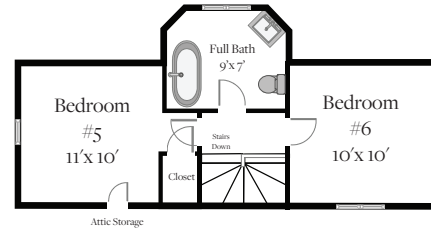


Welcome to 29 METCALF STREET, Worcester, MA



Mathieu
Newton

Sotheby's
INTERNATIONAL REALTY

MARKETED EXCLUSIVELY BY: **MARIA ROMERO VAGNINI & DAN MESERVEY**
tel: 617.640.1400 or 774.364.3138
email: maria.vagnini@sothebysrealty.com or dan.meservey@mnsir.com